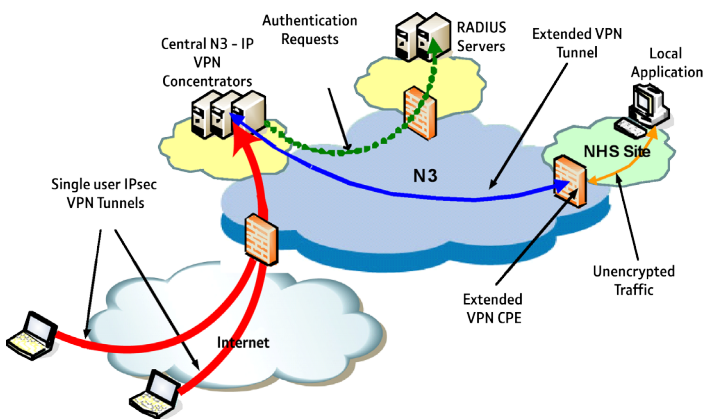


N3 Remote Worker: Single user VPN and Extended VPN

N3's Remote Worker services are ideal for people on the move. You can access N3 wherever you are - a patient's home, a different office or even parked in your car. N3 has two Remote Worker services: Single User VPN and Extended VPN, the difference between the two is in the level of encryption and security. To find out which service is right for you, refer to the comparison chart over the page.

Single User VPN

Single User VPN enables you to access the N3 network via the internet. Traffic between the edge of the N3 network and your computer is encrypted as highlighted by the red arrows in the diagram below.



Extended VPN

Extended VPN is an optional extension of the Single User VPN. The Extended VPN provides a secure, encrypted tunnel to carry traffic between an N3-connected site and your internet-connected computer. This traffic is encrypted as shown by the blue arrow in the above diagram.

N3 recommend that broadband-based catalogue services have between two and eight Single User VPNs assigned against one Extended VPN service. For private circuit-based catalogue services, we recommend between 6 - 20 Single User VPNs assigned against one Extended IP VPN service.



How does it work?

Once connected to the internet, type in the six-digit code provided by the SecID token. You are immediately connected to the N3 network - easy!

What computer system do I need?

N3 Remote Worker services require Windows 2000, XP or Vista (32bit only).

What N3 connection do I need?

N3 Remote Worker services are suitable for most broadband or private circuit N3 connections. However, some of the smaller N3 connections may not be suitable. To find out more call us on **0800 085 0503** option 3 to discuss.

How does it work with an Ethernet connection?

If you have an N3 Ethernet connection we can provide you with a bespoke solution. Please call us on **0800 085 0503** option 3 and we can chat through your requirements.

How to order N3 Remote Worker

Once you have decided which N3 Remote Worker service to order, please contact your Trust who can order these on the N3 CRM on your behalf.

The catalogue numbers for these services are:

- Single User VPN = N3-12-1
- Extended VPN = N3-12-4

Please remember to order your Single User VPNs at the same time as your Extended VPN so we can assign them to each other. If you have any queries, please call us on **0800 085 0503** option 3 or visit our website **www.n3.nhs.uk**

Access to N3 services wherever you are

Remote Worker means you can access and update patient records on the spot. So whether you need to work from home or a different office, all you need is an internet connection – WiFi, 3G, GPRS, ADSL, cable.

Comparison of Single User VPN (N3-12-1) and Extended VPN (N3-12-4)

N3SP have launched Extended VPN (N3-12-4) to give users of Single User VPN (N3-12-1) a higher level of security. The chart below compares these two products and highlights the security benefits the Extended VPN offers.

	Single User VPN (N3-12-1)	Extended VPN (N3-12-4)
Description	Single User VPN enables a user on the internet to access the N3 network. Traffic between the edge of the N3 network and the user on the internet is encrypted as highlighted by the red arrows in the diagram on page 1.	Extended VPN is an optional extension of the Single User VPN. The Extended VPN provides a secure, encrypted link to carry traffic between an N3 connected site and users located on the internet. This traffic is encrypted as shown by both the red and blue arrows in the diagram on page 1.
What users can access	Users of Single User VPN can access all applications hosted on N3 and all local applications, where user access is explicitly allowed. Please note: For access to local applications via Single User VPN, local firewalls must allow access to the entire range of addresses the Trust has been allocated by N3SP. If you would like to securely access an N3 connected site, we recommend you also purchase the Extended VPN (N3-12-4).	Users of Extended VPN can access the N3 CRM network, all local hosted applications and the internet.
Encrypted traffic	The Single User VPN encrypts traffic across the internet only. Traffic across N3 is not encrypted unless done at application level.	The Extended VPN encrypts traffic across the internet and the N3 network to a specific site.
Number of users supported	Unlimited per Trust.	A maximum of 30 Single User VPNs can be supported per Extended VPN, although end site CPE limitations may reduce this number. Please refer to the product brochure on the N3 CRM for more details. N3SP offer a bespoke service that supports an unlimited number of Single User VPNs per site. For bespoke Extended VPN services please contact your N3SP Account Manager on 0800 085 0503 option 3.

A sustainable way of working

- N3 Remote Worker is helping organisations meet their efficiency and sustainability targets and improve patient care. N3 Remote Worker can help your organisation:
- reduce expenditure on office overheads
- increase productivity through efficient and effective work styles
- provide better working conditions for employees with increased control over work location and timing
- reduce commuter travel, having a considerable environmental impact

Further information

- Extended VPN is assigned a static IP address on an individual basis
- Single User VPN is dynamically allocated an IP address from the Trust address pool
- N3 Remote Worker services support Network Address Translation (NAT) at your GP surgery
- Extended VPN is supported on both the primary and back up N3 connection
- N3 has designed the Extended VPN so that it can be added to existing N3 connections. In most instances this allows customers to order and receive branch-and-main (N3-12-7/8) connections as well as the Extended VPN service

For more information please call the N3 Helpdesk on [0800 085 0503](tel:08000850503) option 3 or see the website www.n3.nhs.uk

N3 managed on behalf of
the NHS by

